

Participation In One's Community *At A Glance*

Data From Visits

-93.92% of people go shopping

-95.31% go on errands and appointments

-87.77% go out for entertainment

-93.99% sometimes go out to eat

-40.38% go to religious services

-57.04% do not go to religious services and of these, the top 5 reasons they don't go are:

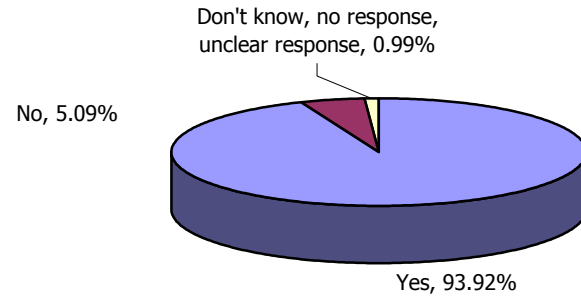
1. Do not want to go: 63.64%
2. No reason given, but wants to start going: 14.68%
3. Don't know, no response or unclear response: 11.94%
4. Staff not available: 1.20%
5. Behavioral challenges impede participation: 1.20%

-9.32% go to non-religious integrated club meetings

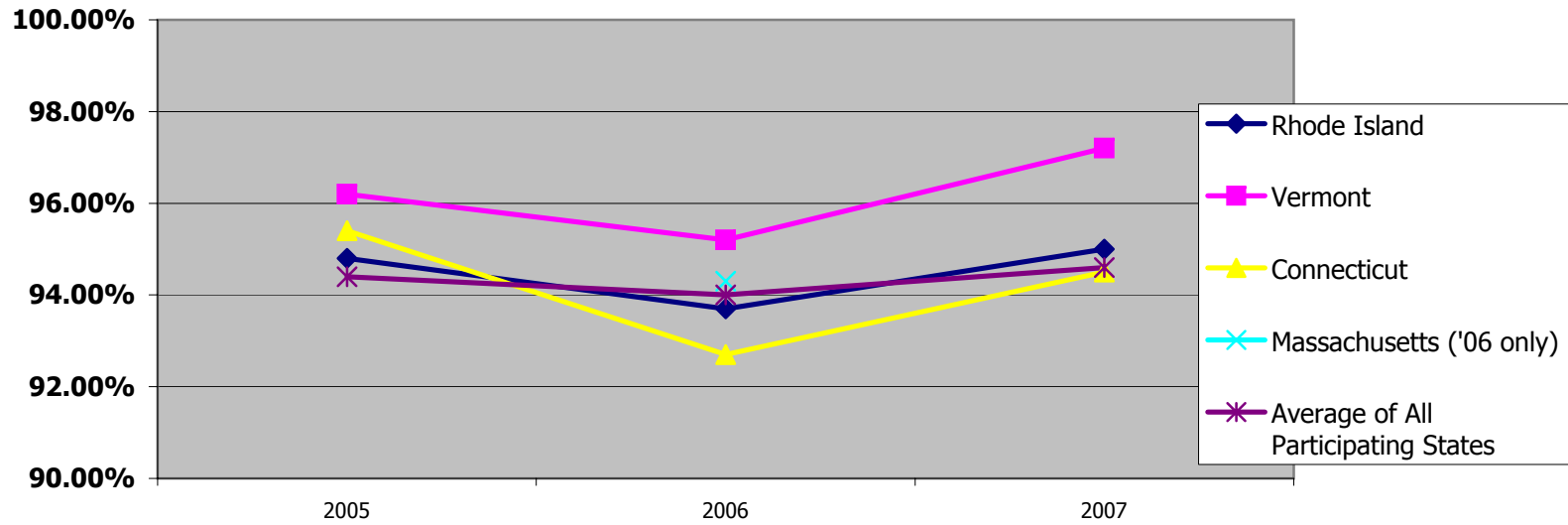
-55.72% exercise or play sports in an integrated community setting

Shopping

Do you go shopping?



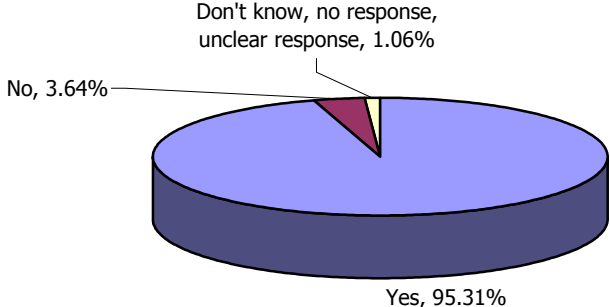
Percent of People Who Go Shopping (2005-2007), NCI Data



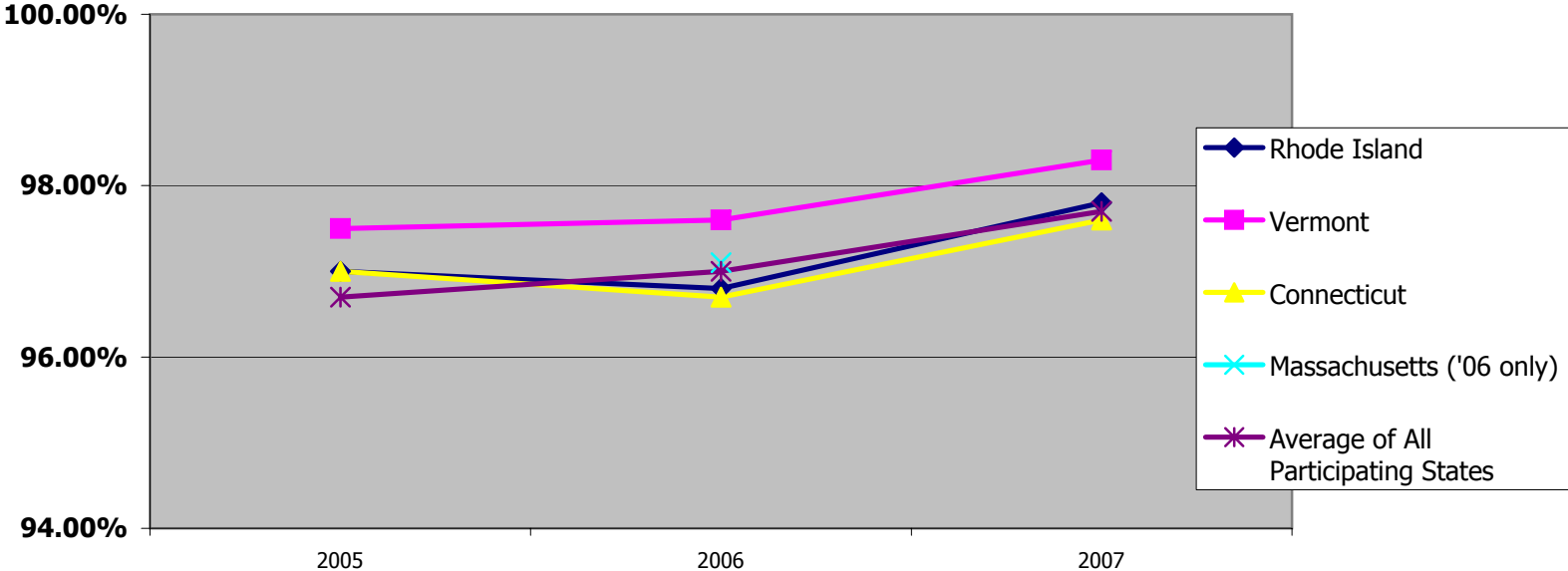
Rhode Island ranked 8 out of 17.34 participating states (3 year average, variable number of states per year, per question)

Errands & Appointments

Do you go out on errands and appointments?



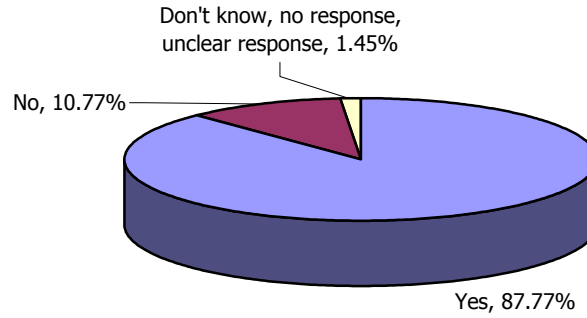
Percent of People Who Go On Errands & Appointments (2005-2007), NCI Data



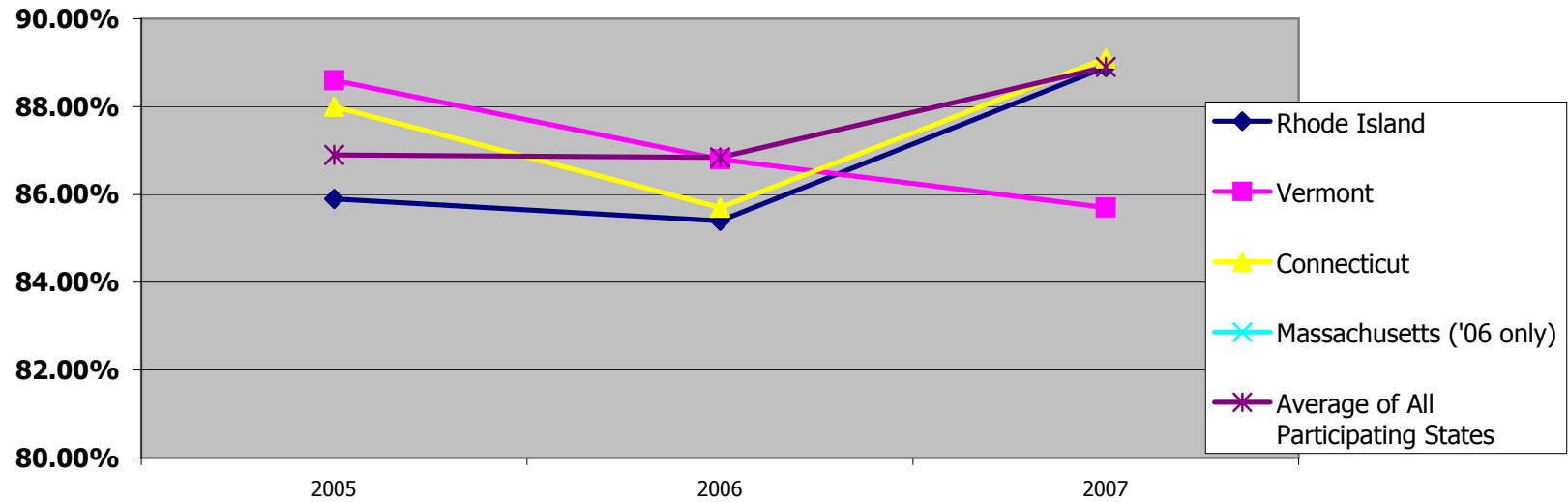
*Rhode Island ranked 9 out of 17.34 participating states (3 year average)
 (3 year average, variable number of states per year, per question)*

Entertainment

Do you go out for entertainment?



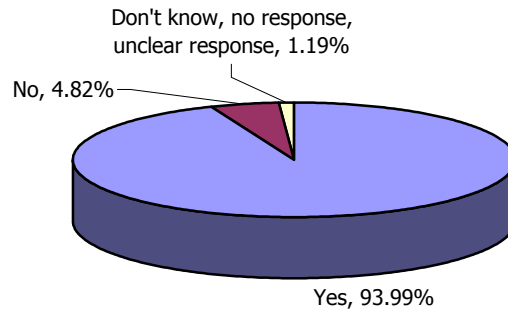
Percent of People Who Go For Entertainment (2005-2007), NCI Data



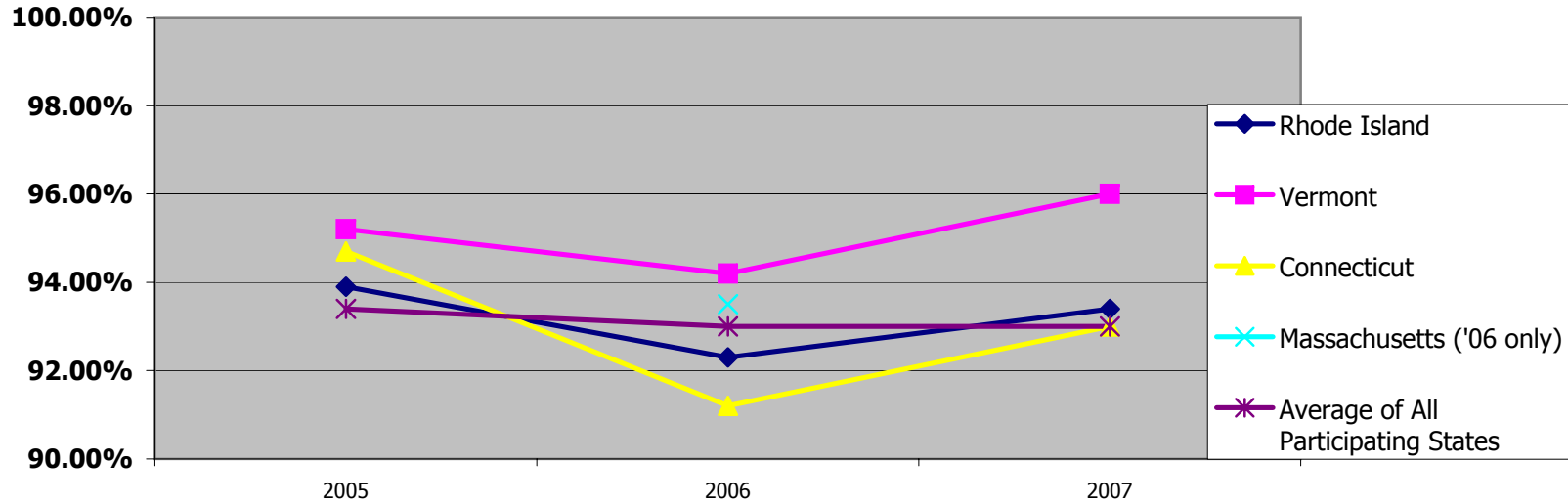
*Rhode Island ranked 13 out of 17.34 participating states
(3 year average, variable number of states per year, per question)*

Going Out to Eat

Do you always eat at home or do you sometimes go out to eat?



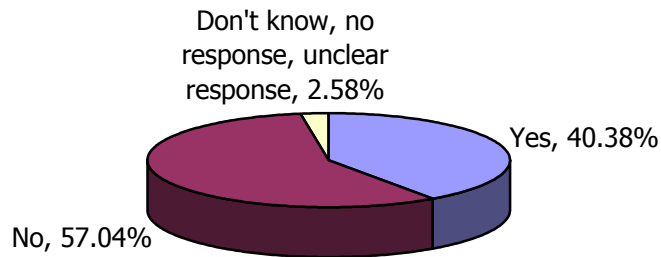
Percent of People Who Go Out to Eat (2005-2007), NCI Data



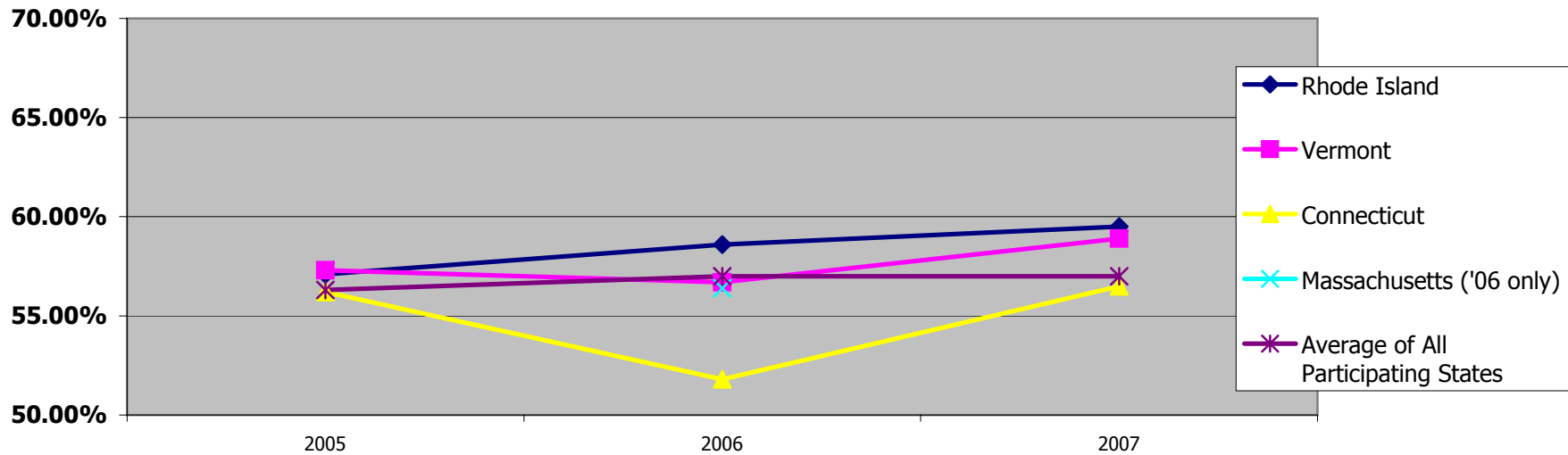
*Rhode Island ranked 8 out of 17.34 participating states
(3 year average, variable number of states per year, per question)*

Religious Services

Do you go to religious services?



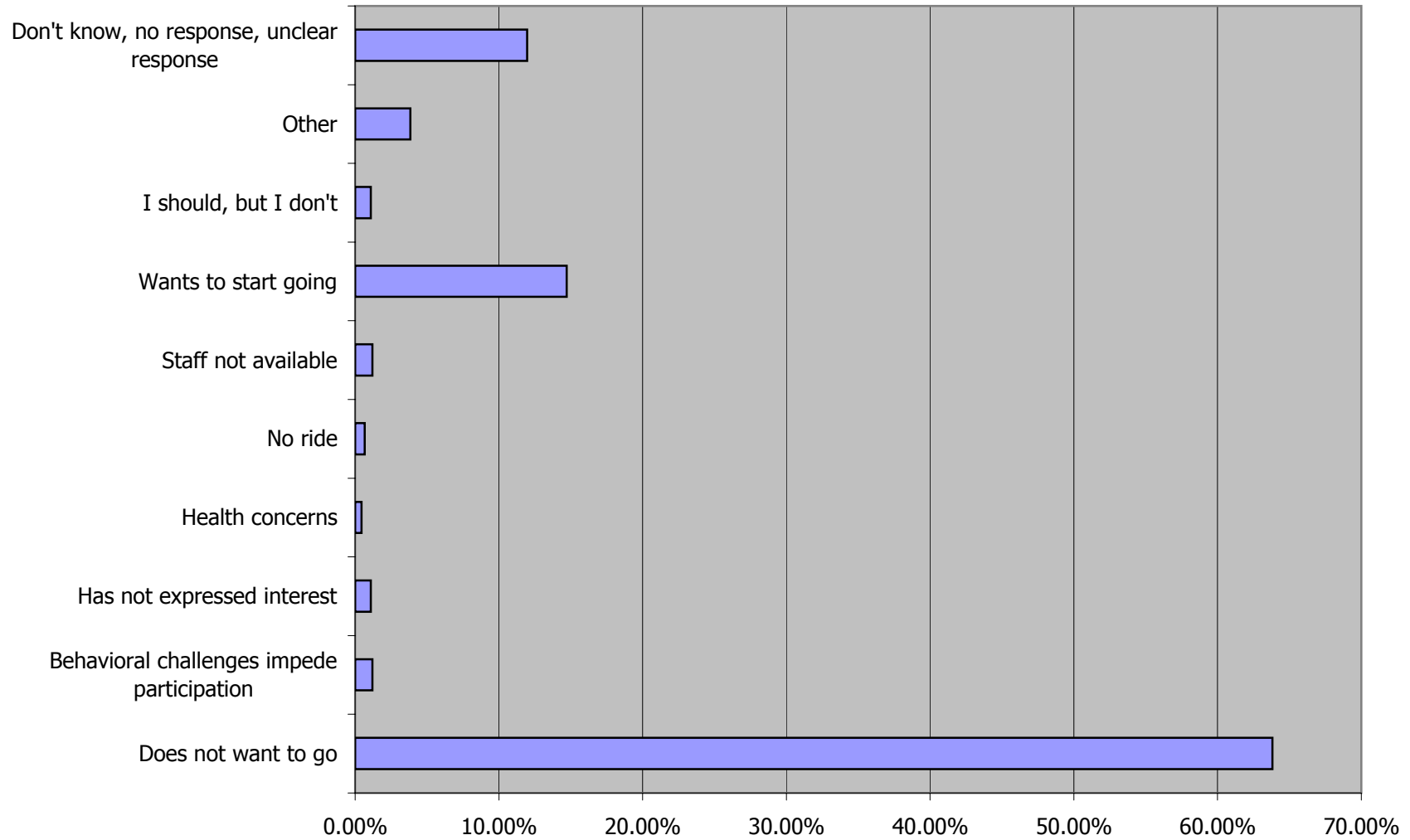
Percent of People Who Go to Religious Services (2005-2007), NCI Data



Rhode Island ranked 5.67 out of 17.34 participating states (3 year average, variable number of states per year, per question)

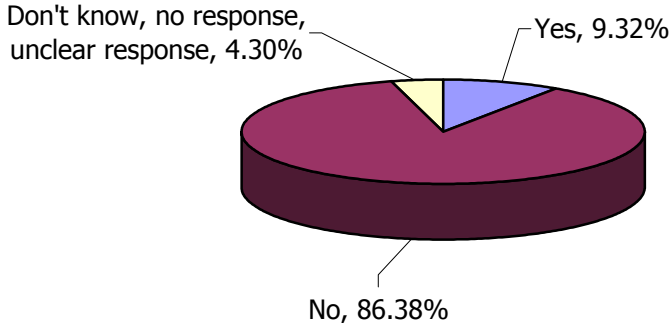
Religious Services, RI Data

If no (57% said no) , do you want to go to religious services?

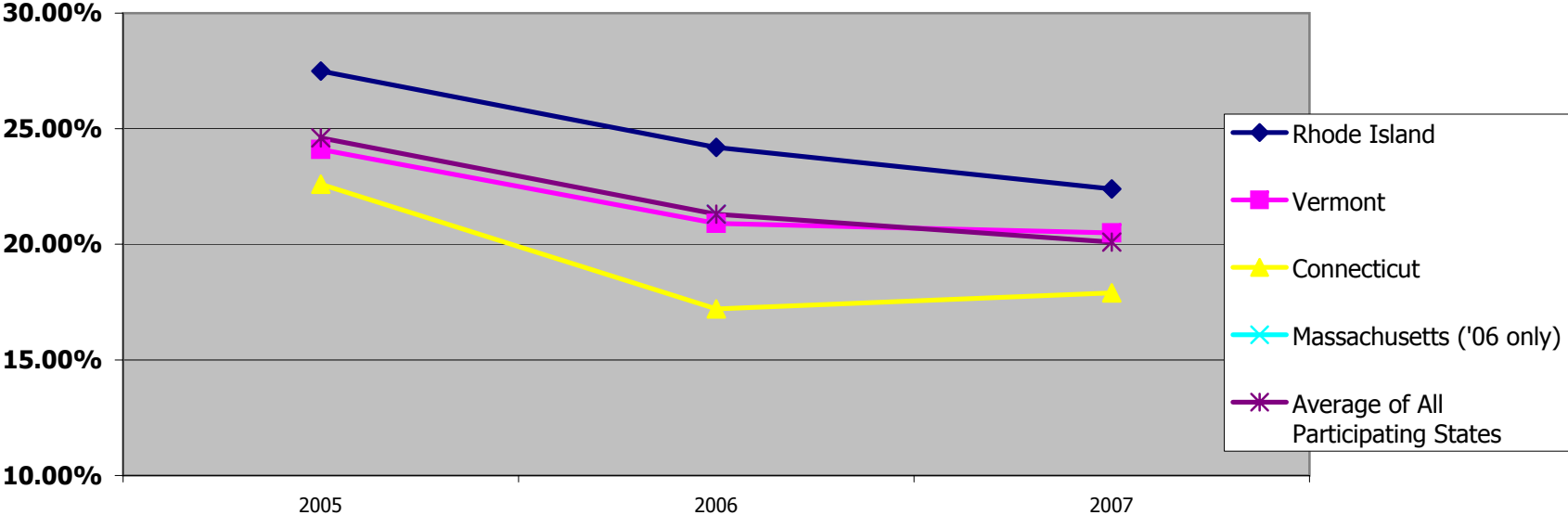


Non-Religious, Integrated Clubs

Do you go to non-religious integrated clubs?



Percent of People Who Participate in Non-Religious, Integrated Clubs (2005-2007), NCI Data



Rhode Island ranked 4 out of 17.34 participating states (3 year average, variable number of states per year, per question)

Participation In One's Community

Comments:

•In order of average percentage, community activities people participate in are:

1. Errands and appointments: 95.31%
2. Out to eat: 93.99%
3. Shopping: 93.92%
4. Entertainment: 87.77%
5. Religious services: 40.38%
6. Non-religious integrated club meetings: 9.32%

•In regards to religious services, of the 913 people who do not go to services, 581 or 63.82% do not want to go. 134 people want to start going and 109 don't know if they want to go or not.

It is felt there is a group of people who have not had ample opportunity to explore religious service in their area. Religious services can be a wonderful place to make connections with community members.

•It is felt by our visitors that sometimes activities/places are routine and not always built or expanded on around a person's interests. In addition, there is a need to support people in meeting other community members and in doing positive community acts. Will shrinking resources impact the support that is needed to make real connections in one's community? Are the staff supported and given the tools to help connect individuals to their community in meaningful ways?